

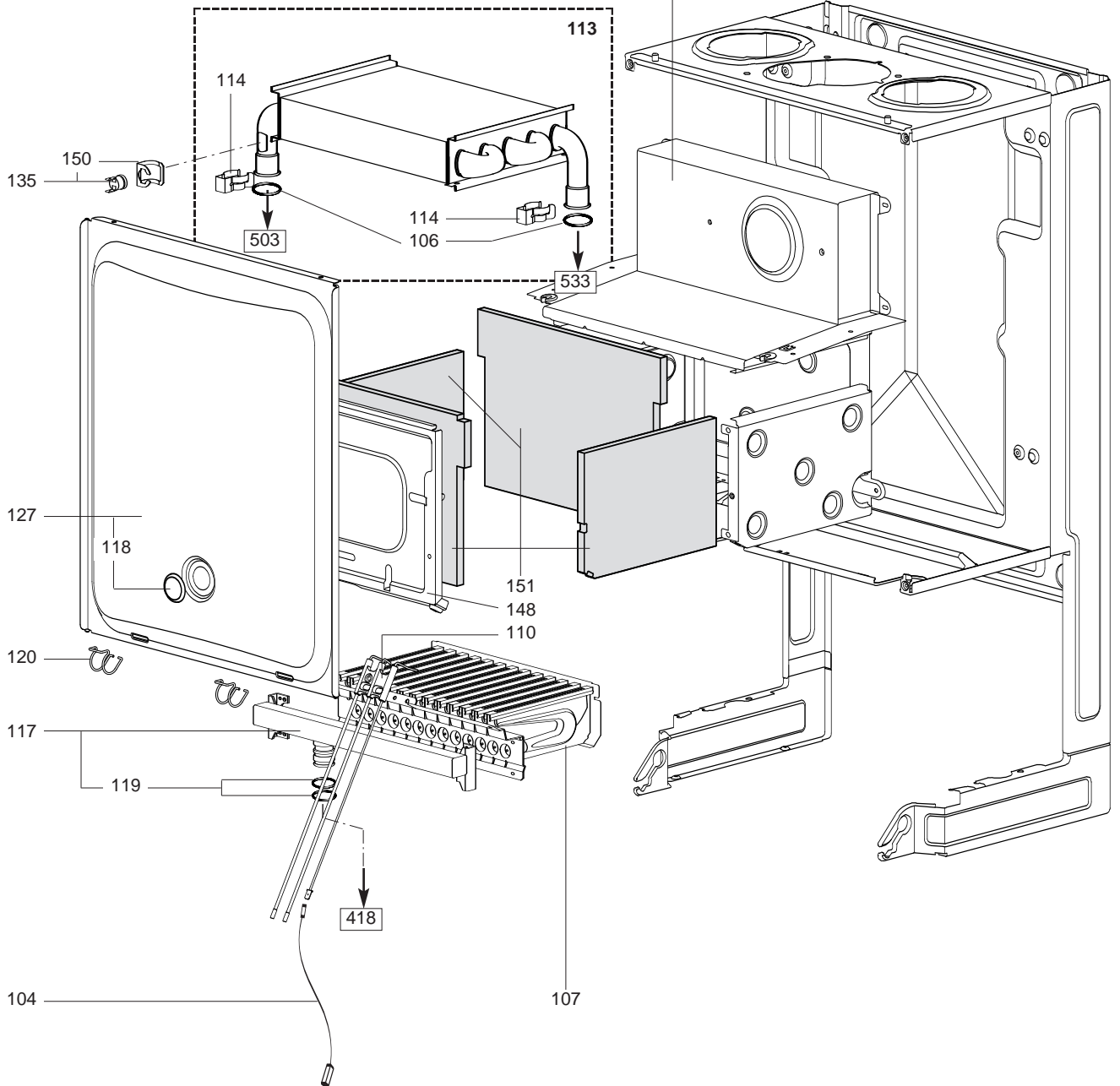
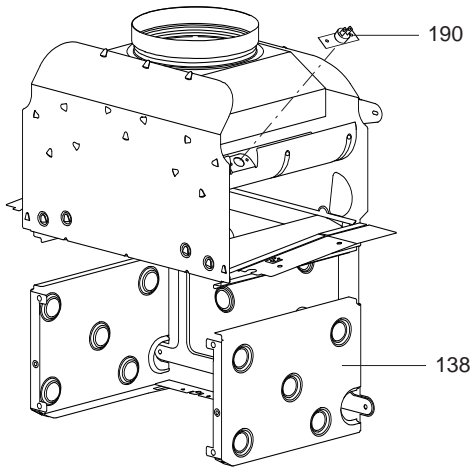
SPARE PARTS EXPLODED VIEW GAS WALL BOILERS

Model

GENUS - CLAS- CLAS SYSTEM

R8215453-04EN - Edition 04 - 01/03/2008

3300106	GENUS 24 FF NG (IT)
3300233	GENUS 24 FF NG PI
3300119	GENUS 24 FF LPG (IT)
3300238	GENUS 24 FF LPG PI
3300109	GENUS 24 CF NG (IT)
3300234	GENUS 24 CF NG PI
3300120	GENUS 24 CF LPG (IT)
3300239	GENUS 24 CF LPG PI
3300112	GENUS 28 FF NG (IT)
3300235	GENUS 28 FF NG PI
3300121	GENUS 28 FF LPG (IT)
3300240	GENUS 28 FF LPG PI
3300115	GENUS 28 CF NG (IT)
3300236	GENUS 28 CF NG PI
3300122	GENUS 28 CF LPG (IT)
3300241	GENUS 28 CF LPG PI
3300117	GENUS 32 FF NG (IT)
3300237	GENUS 32 FF NG PI
3300123	GENUS 32 FF LPG (IT)
3300242	GENUS 32 FF LPG PI
3300243	CLAS 24 FF NG (IT)
3300108	CLAS 24 FF NG (PI)
3300246	CLAS 24 FF LPG (IT)
3300124	CLAS 24 FF LPG (PI)
3300244	CLAS 24 CF NG (IT)
3300111	CLAS 24 CF NG (PI)
3300247	CLAS 24 CF LPG (IT)
3300125	CLAS 24 CF LPG (PI)
3300245	CLAS 28 FF NG (IT)
3300114	CLAS 28 FF NG (PI)
3300248	CLAS 28 FF LPG (IT)
3300126	CLAS 28 FF LPG (PI)
3300197	CLAS 24 FF SYSTEM NG (IT)
3300199	CLAS 24 CF SYSTEM NG (IT)
3300249	CLAS 28 FF SYSTEM NG (IT)
3300201	CLAS 28 FF SYSTEM NG (PI)
3300250	CLAS 28 CF SYSTEM NG (IT)
3300203	CLAS 28 CF SYSTEM NG (PI)
3300251	CLAS 32 FF SYSTEM NG (IT)
3300205	CLAS 32 FF SYSTEM NG (PI)

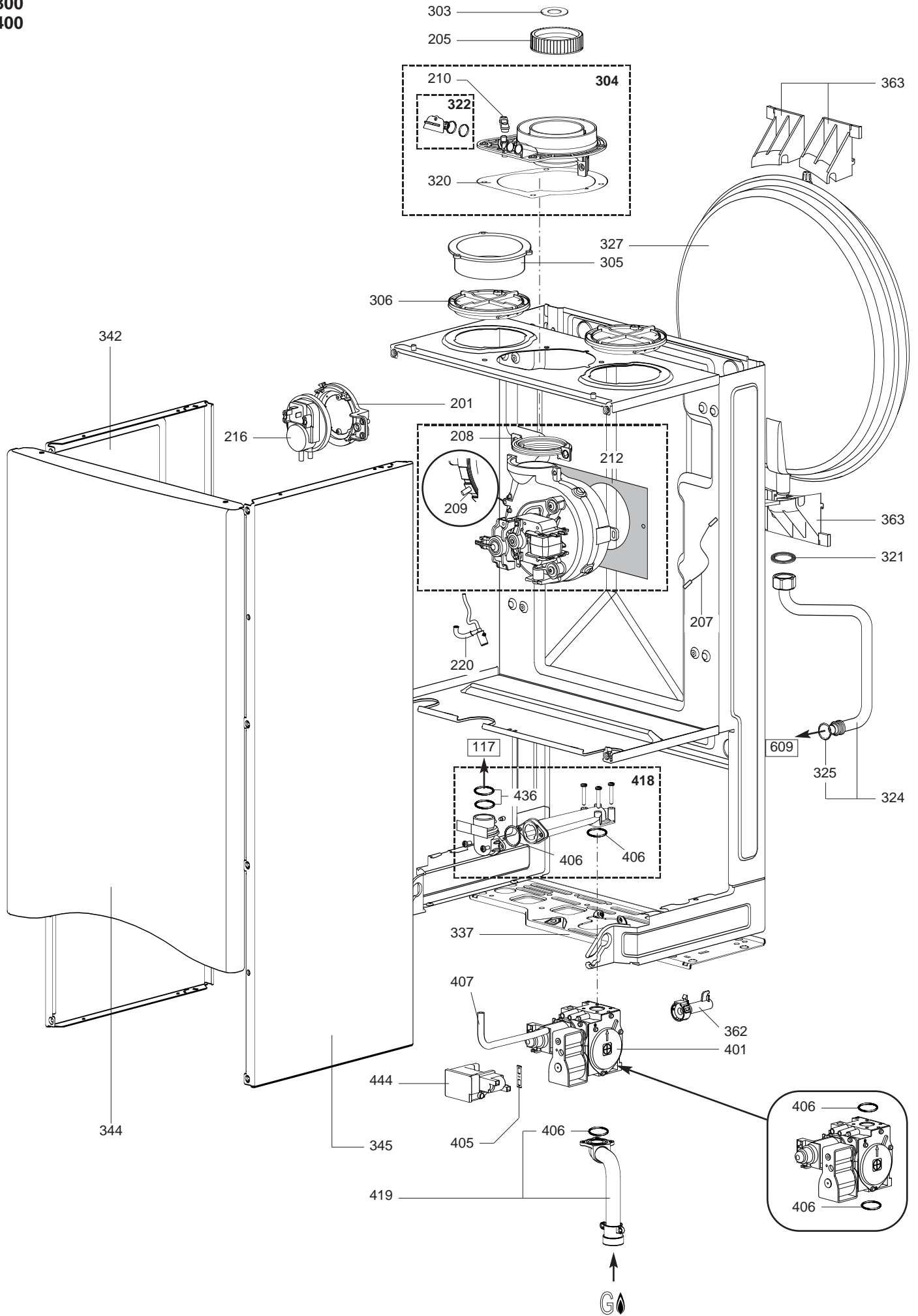


Senal	Designación	Referencia	Tipo	GENUS												Fecha					
				24		28		32		24		28		24		28		32		de	a
				FF	CF	FF	CF	FF	CF	FF	CF	FF	CF	FF	CF	FF	CF				
0100	SEALED CASE																				
0104	FLAME SENSOR WIRING (ELECTRODE SIDE)	65104526		•	•	•	•	•	•	•	•	•	•	•	•	•	•				
0106	O-RING 3,53X17,04	65104262		•	•	•	•	•	•	•	•	•	•	•	•	•	•				
0107	BURNER	65104220		•						•								02/08			
	BURNER	65104220			•	•				•	•										
	BURNER	65105027					•	•								•	•				
	BURNER	65106294		•					•			•						03/08			
0110	ELECTRODE (IGNITION/DETECTION)	65104549		•	•	•	•	•	•	•	•	•	•	•	•	•	•				
0113	MAIN EXCHANGER	65104246		•						•								02/08			
	MAIN EXCHANGER	65104246				•						•									
	MAIN EXCHANGER	65104247			•							•									
	MAIN EXCHANGER	65105030					•								•						
	MAIN EXCHANGER	65105041						•								•					
	MAIN EXCHANGER	65106297		•					•			•						03/08			
0114	CLIP	61307589		•	•	•	•	•	•	•	•	•	•	•	•	•	•				
0117	GAS MANIFOLD	65104223	LG	•						•								02/08			
	GAS MANIFOLD	65104223	LG		•						•										
	GAS MANIFOLD	65104225	LG			•						•									
	GAS MANIFOLD	65105036	LG				•														
	GAS MANIFOLD	65105043	LG					•													
	GAS MANIFOLD	65106605	LG	•					•									03/08			
	GAS MANIFOLD	65104226	NG			•					•			•							
	GAS MANIFOLD	65104302	NG	•						•			•					02/08			
	GAS MANIFOLD	65104302	NG		•						•			•							
	GAS MANIFOLD	65105026	NG				•								•						
	GAS MANIFOLD	65105037	NG					•								•					
	GAS MANIFOLD	65106302	NG	•					•			•						03/08			
0118	SIGHT GLASS	65104232		•		•			•	•	•	•	•	•	•	•	•				
0119	O-RING 17,17X1,78	65104303		•	•	•	•	•	•	•	•	•	•	•	•	•	•				
0120	SPRING FRONT PANEL (KIT)	65104298		•		•			•	•	•	•	•	•	•	•	•				
0127	PANEL (FRONT - SEALED CHAMBER)	65104236		•		•				•	•	•	•	•	•	•	•	05/07			
	PANEL (FRONT - SEALED CHAMBER)	65105038						•									•	05/07			
	PANEL (FRONT - SEALED CHAMBER)	65105678		•		•				•	•	•	•	•	•	•	•	06/07			
	PANEL (FRONT - SEALED CHAMBER)	65105679						•									•	06/07			
0135	THERMOSTAT	65104500		•	•	•	•	•	•	•	•	•	•	•	•	•	•				
0138	COMBUSTION CHAMBER	65104218				•				•			•								
	COMBUSTION CHAMBER	65104219		•						•			•					02/08			
	COMBUSTION CHAMBER	65104219				•						•			•						
	COMBUSTION CHAMBER	65105028					•								•						
	COMBUSTION CHAMBER	65105040						•								•					
	COMBUSTION CHAMBER	65106301		•					•			•						03/08			
0148	PANEL (COMBUSTION CHAMBER)	65104240		•						•			•					02/08			
	PANEL (COMBUSTION CHAMBER)	65104240			•	•				•	•	•	•	•	•	•	•				
	PANEL (COMBUSTION CHAMBER)	65105033					•	•								•	•				
	PANEL (COMBUSTION CHAMBER)	65106296		•					•			•						03/08			
0150	CLIP	61010050		•	•	•	•	•	•	•	•	•	•	•	•	•	•				
0151	PANELS (KIT)	65104695		•						•			•					02/08			
	PANELS (KIT)	65104695				•	•			•	•	•	•	•	•	•	•				
	PANELS (KIT)	65105029					•	•								•	•				
	PANELS (KIT)	65106298		•					•			•						03/08			
0190	THERMOSTAT 75-65°C	999539			•		•			•			•			•					

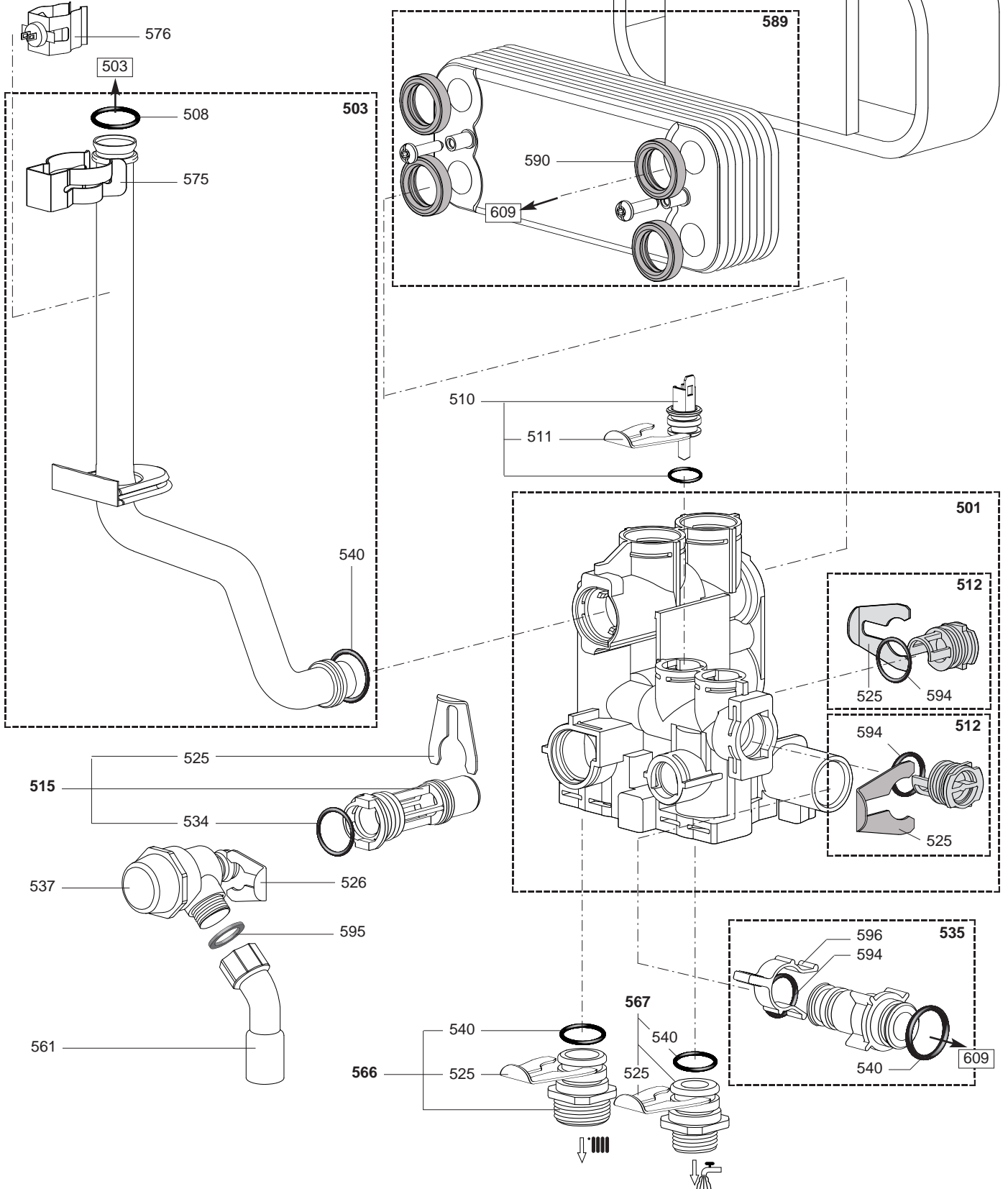
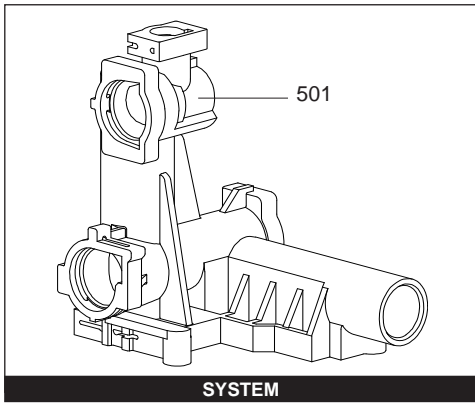
200
300
400

GENUS - CLAS - CLAS SYSTEM

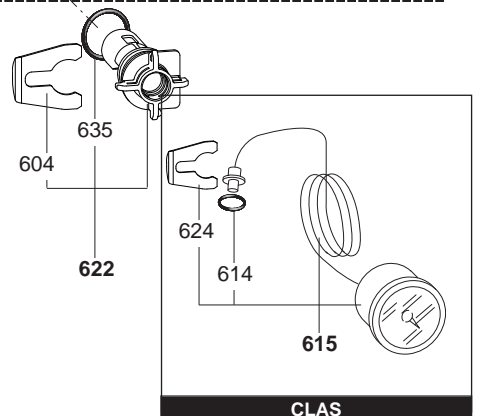
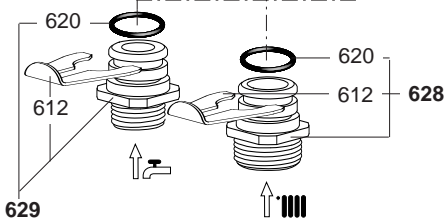
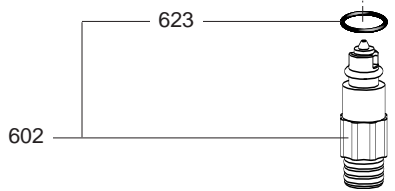
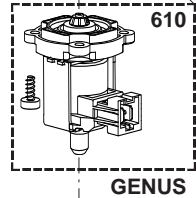
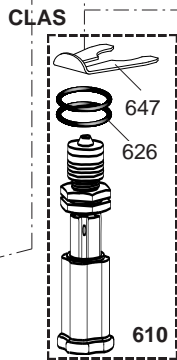
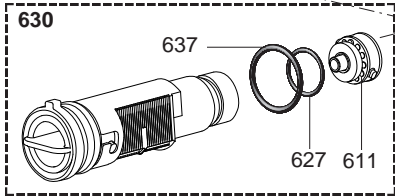
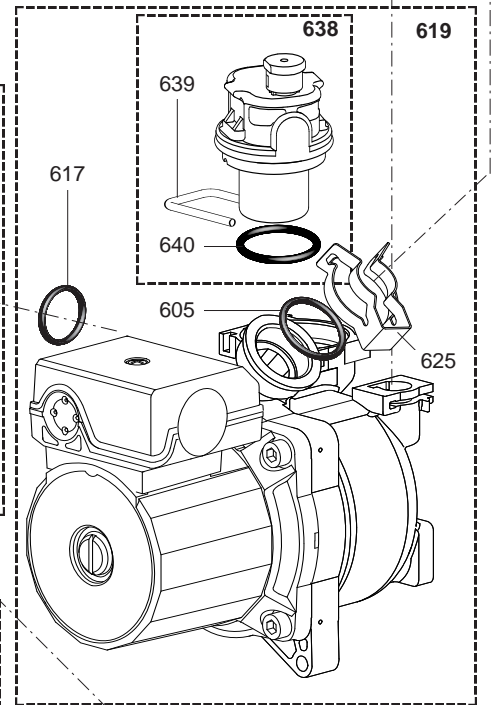
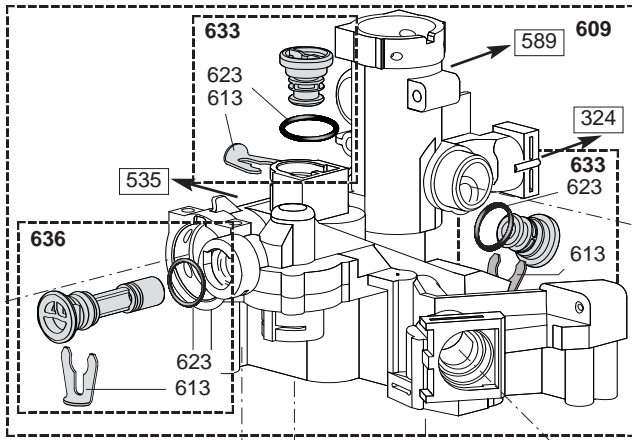
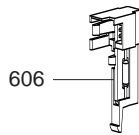
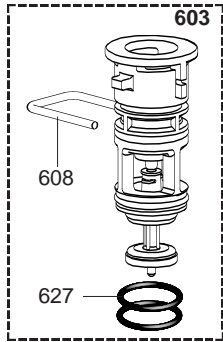
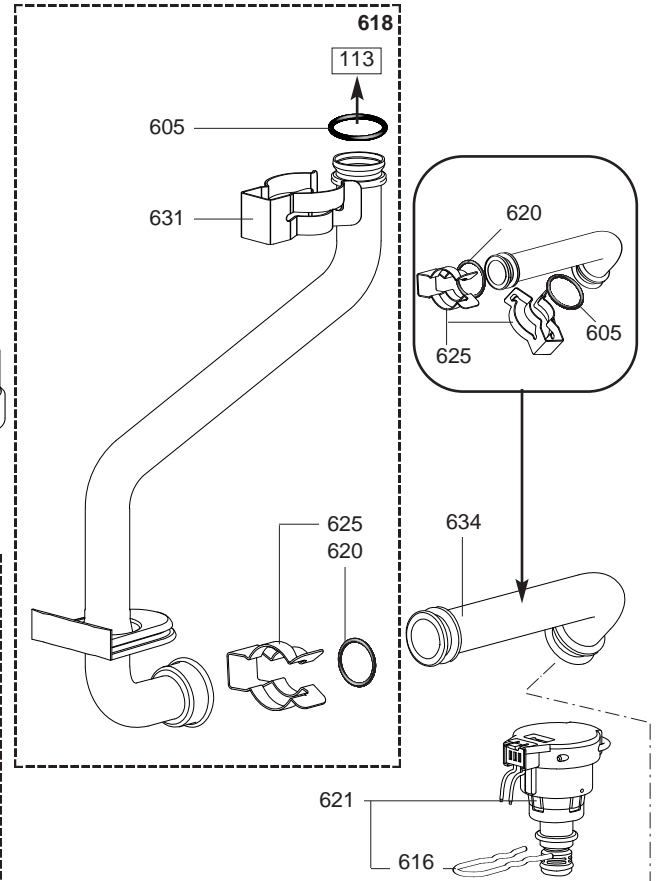
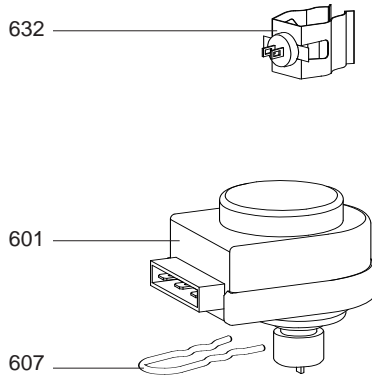
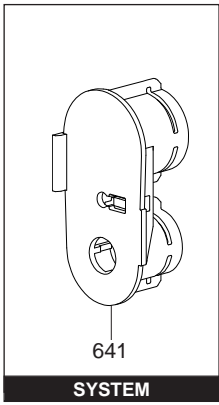
Domestic Gas Boilers



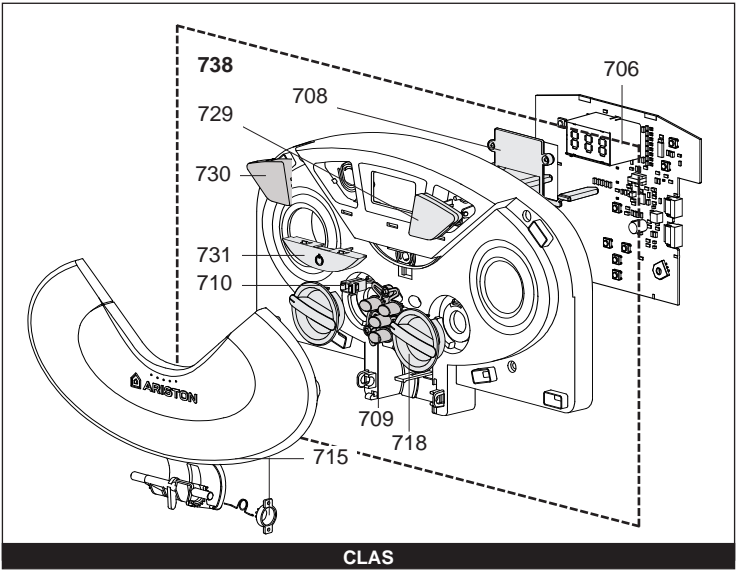
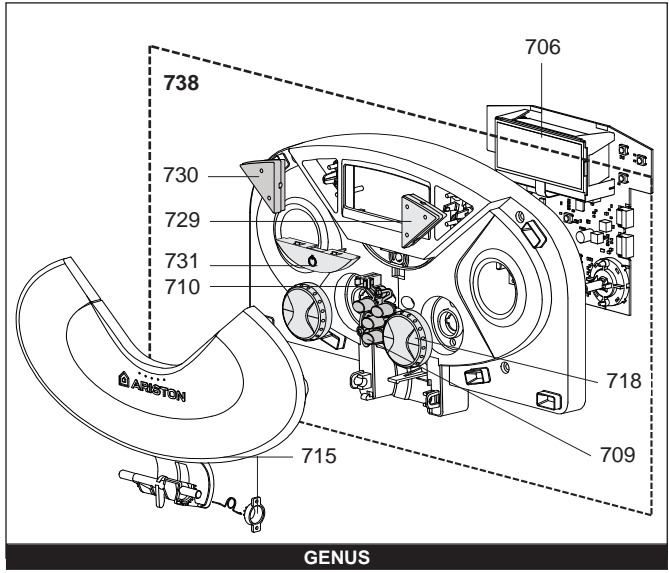
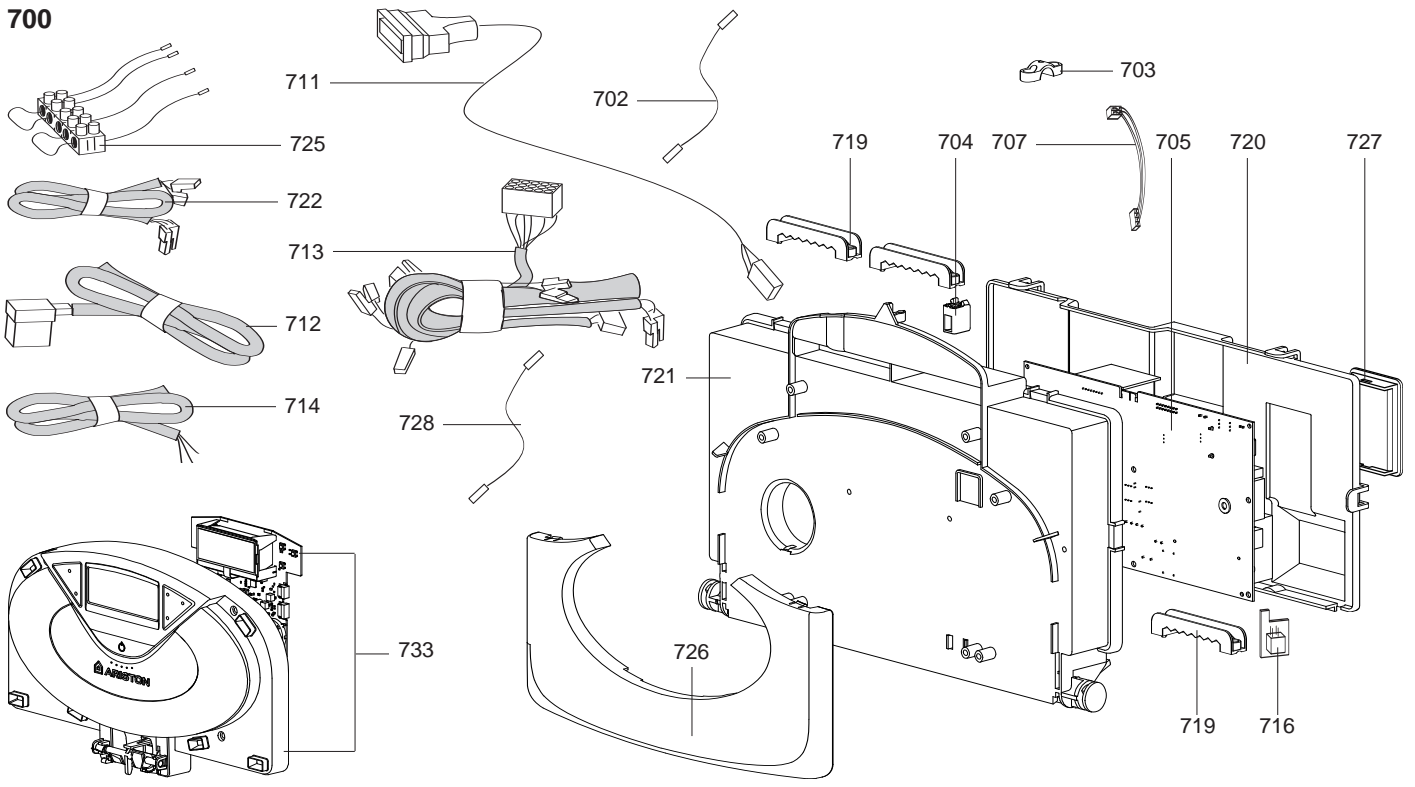
Senal	Designación	Referencia	Tipo	GENUS												Fecha					
				24		28		32		24		28		24		28		32		de	a
				FF	CF	FF	CF	FF	CF	FF	CF	FF	CF	FF	CF	FF	CF				
0200	FAN ASSEMBLY																				
0201	SUPPORT (AIR PRESSURE SWITCH)	65104378		•	•	•	•	•	•	•	•	•	•	•	•	•					
0205	COLLAR GASKET	65104258		•	•	•	•	•	•	•	•	•	•	•	•	•					
0206	FAN	65104231			•																
	FAN	65104255		•																	
	FAN	65104357					•			•											
	FAN	65104452						•					•								
	FAN	65105042					•														
	FAN	65105155																	•		
0207	EARTH WIRE	65104286		•	•	•	•	•	•	•	•	•	•	•	•	•					
0208	FAN GASKET	65104257		•	•	•	•	•	•	•	•	•	•	•	•	•					
0209	VENTURI	65106515				•				•				•							
	VENTURI	65106516		•			•			•				•							
	VENTURI	65106517					•												•		
0210	AIR INTAKE COVER	573329		•	•	•	•	•	•	•	•	•	•	•	•	•					
0212	PANEL (INSULATION - FAN)	65104305		•	•	•	•	•	•	•	•	•	•	•	•	•					
0216	AIR PRESSURE SWITCH	65104671		•			•			•				•							
	AIR PRESSURE SWITCH	65104672				•				•				•							
0220	CONDENSATE TRAP	65104623		•	•	•	•	•	•	•	•	•	•	•	•	•					
0300	CHASSIS-FRONT CASE																				
0303	RESTRICTOR D=46	65101023					•												•		
	RESTRICTOR (D=44)	65105078		•	•			•		•	•			•							
0304	FLUE (EXHAUST MANIFOLD / HEADER)	65105393		•	•	•	•	•	•	•	•	•	•	•	•	•					
0305	AIR RETURN MANIFOLD	65104710		•	•	•	•	•	•	•	•	•	•	•	•	•					
0306	AIR RETURN COVER	65104249		•	•	•	•	•	•	•	•	•	•	•	•	•					
0320	GASKET	60000317		•	•	•	•	•	•	•	•	•	•	•	•	•					
0321	GASKET 3/8	573521		•	•	•	•	•	•	•	•	•	•	•	•	•					
0322	FLUE INTAKE PLUG	65104295		•	•	•	•	•	•	•	•	•	•	•	•	•					
0324	PIPE (EXPANSION VESSEL)	65104253		•	•	•	•	•	•	•	•	•	•	•	•	•					
0325	O-RING D: 8.9-2.7	61009834-14		•	•	•	•	•	•	•	•	•	•	•	•	•					
0327	EXPANSION VESSEL	65104261		•	•	•	•	•	•	•	•	•	•	•	•	•					
0337	HYDRAULIC GROUP SUPPORT	65104311		•	•	•	•	•	•	•	•	•	•	•	•	•					
0342	CASE PANEL (L.H. SIDE)	65104242		•	•	•	•	•	•	•	•	•	•	•	•	•			05/07		
	CASE PANEL (L.H. SIDE)	65105676		•	•	•	•	•	•	•	•	•	•	•	•	•		06/07			
0344	CASE PANEL (FRONT)	65104299		•	•	•	•	•	•	•	•	•	•	•	•	•					
	CASE PANEL (FRONT)	65105031				•	•									•					
0345	CASE PANEL (R.H. SIDE)	65104241		•	•	•	•	•	•	•	•	•	•	•	•	•			05/07		
	CASE PANEL (R.H. SIDE)	65105677		•	•	•	•	•	•	•	•	•	•	•	•	•		06/07			
0362	MAGNET	65104670		•	•	•	•														
0363	EXPANSION VESSEL SUPPORT	65104696		•	•	•	•	•	•	•	•	•	•	•	•	•					
0400	GAS SECTION																				
0401	GAS VALVE	65104254		•	•	•	•	•	•	•	•	•	•	•	•	•					
0405	GASKET (SPARK GENERATOR)	574279		•	•	•	•	•	•	•	•	•	•	•	•	•					
0406	O-RING 22,22X2,62	65104304		•	•	•	•	•	•	•	•	•	•	•	•	•					
0407	SILICONE PIPE	65104296		•	•	•	•	•	•	•	•	•	•	•	•	•					
0418	PIPE (GAS VALVE/BURNER)	65104230		•	•	•	•	•	•	•	•	•	•	•	•	•					
0419	GAS PIPE	65104251		•	•	•	•	•	•	•	•	•	•	•	•	•					
0436	O-RING 17,17X1,78	65104303		•	•	•	•	•	•	•	•	•	•	•	•	•					
0444	SPARK GENERATOR	65104653		•	•	•	•	•	•	•	•	•	•	•	•	•					



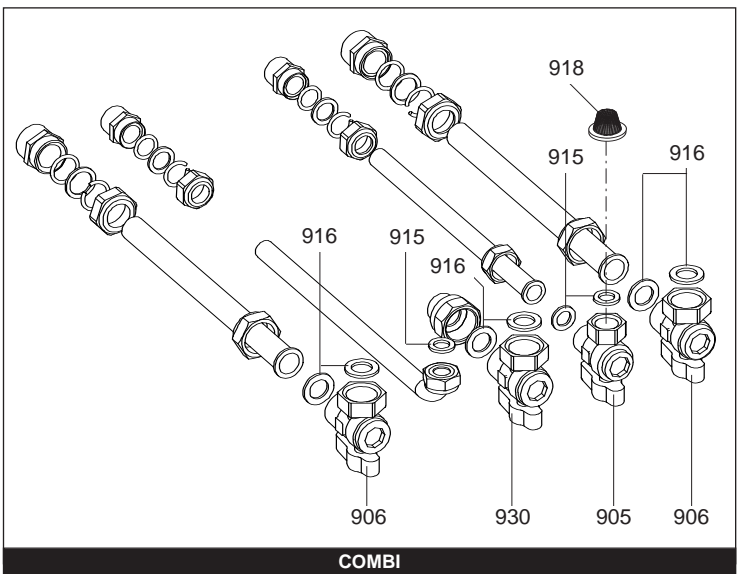
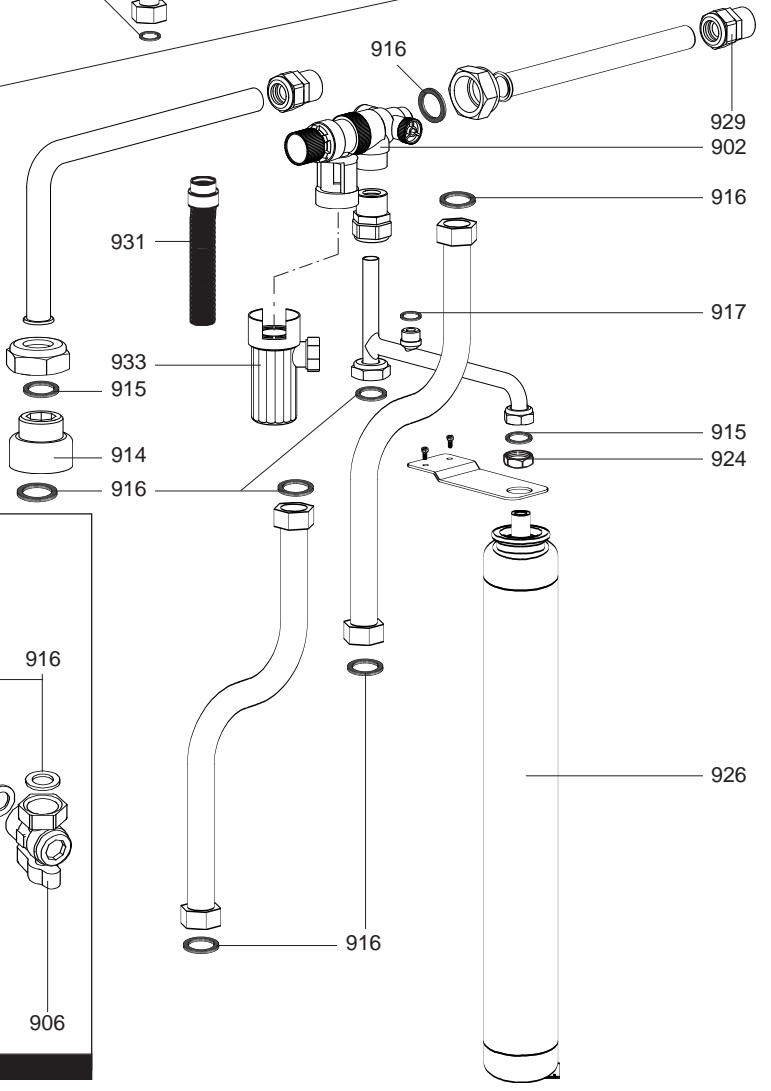
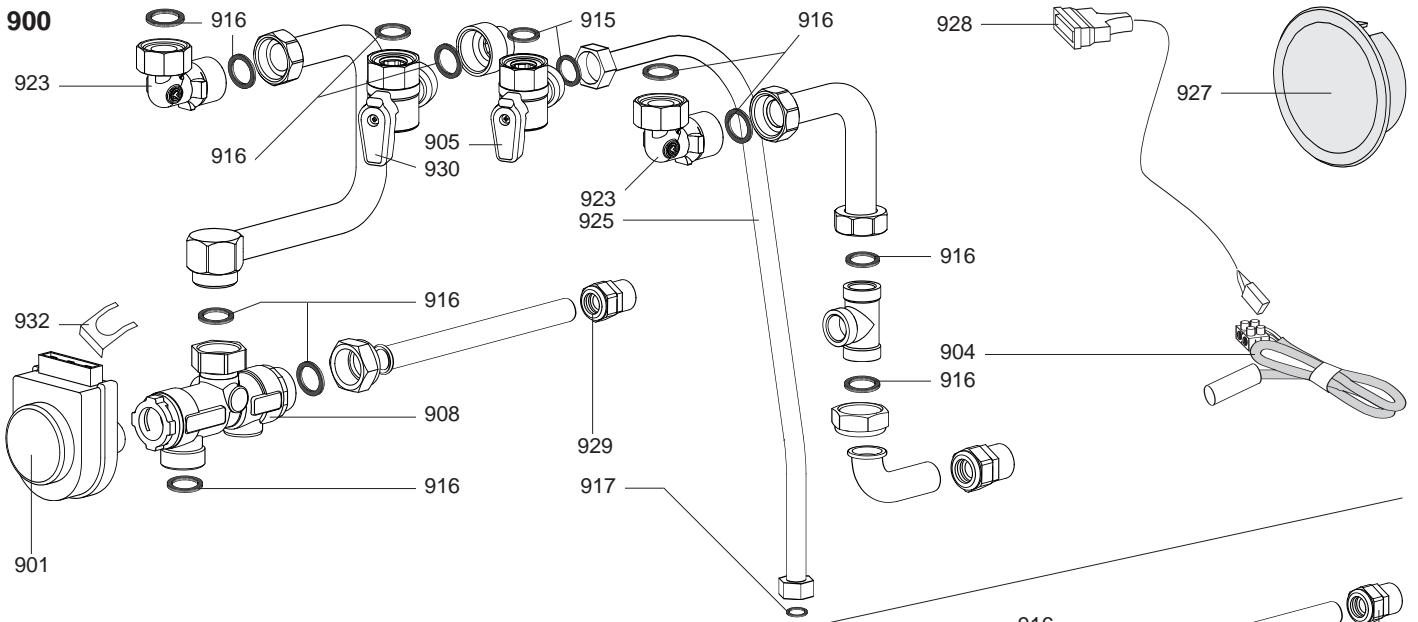
Senal	Designación	Referencia	Tipo													Fecha			
				GENUS		GENUS		GENUS		CLAS		CLAS		CLAS SYSTEM		CLAS SYSTEM		CLAS SYSTEM	
				24	28	32	24	28	24	28	32	FF	CF	FF	CF	FF	CF	FF	CF
0500	FLOW GROUP																		
0501	FLOW GROUP	65104312		•	•	•	•	•	•	•	•	•	•						
	FLOW GROUP	65105182												•	•	•	•		
0503	PIPE (C.H. FLOW)	65104252		•				•					•						02/08
	PIPE (C.H. FLOW)	65104252			•	•	•			•				•	•				
	PIPE (C.H. FLOW)	65105035						•								•	•		
	PIPE (C.H. FLOW)	65106309		•				•					•						03/08
0508	O-RING 3,53X17,04	65104262		•	•	•	•	•	•	•	•	•	•	•	•	•	•		
0510	NTC PROBE	65104338		•	•	•	•	•	•	•	•	•	•	•	•	•	•		
0511	CLIP	65104339		•	•	•	•	•	•	•	•	•	•	•	•	•	•		
0512	PLUG	65104445		•	•	•	•	•	•	•	•	•	•	•	•	•	•		
0515	BY-PASS	65104336		•	•	•	•	•	•	•	•	•	•	•	•	•	•		
0525	CLIP D=18	65104259		•	•	•	•	•	•	•	•	•	•	•	•	•	•		
0526	CLIP D:10	65104260		•	•	•	•	•	•	•	•	•	•	•	•	•	•		
0534	O - RING (15.88X2.62)	65104337		•	•	•	•	•	•	•	•	•	•	•	•	•	•		
0535	BY-PASS PIPE	65104340		•	•	•	•	•	•	•	•	•	•	•	•	•	•		
0537	PRESSURE RELIEF VALVE	61312668		•	•	•	•	•	•	•	•	•	•	•	•	•	•		
0540	O-RING D: 17.86-2.62	61308091		•	•	•	•	•	•	•	•	•	•	•	•	•	•		
0561	PIPE (SAFETY VALVE)	65104447		•	•	•	•	•	•	•	•	•	•	•	•	•	•		
0566	UNION (3/4)	65104326		•	•	•	•	•	•	•	•	•	•	•	•	•	•		
0567	UNION (1/2)	65104327		•	•	•	•	•	•	•	•	•	•	•	•	•	•		
0575	CLIP	61307589		•	•	•	•	•	•	•	•	•	•	•	•	•	•		
0576	TEMPERATURE PROBE + CLIP	990686		•	•	•	•	•	•	•	•	•	•	•	•	•	•		
0589	SECONDARY EXCHANGER	65104333		•	•	•	•	•	•	•	•	•	•	•	•	•	•		
0590	EXCHANGER GASKET	65104334		•	•	•	•	•	•	•	•	•	•	•	•	•	•		
0594	O - RING (15.54X2.62)	65104325		•	•	•	•	•	•	•	•	•	•	•	•	•	•		
0595	SHEET GASKET D: 13.9-10.4-1.5	60061853-02		•	•	•	•	•	•	•	•	•	•	•	•	•	•		
0596	CLIP (BY-PASS PIPE)	65104700		•	•	•	•	•	•	•	•	•	•	•	•	•	•		



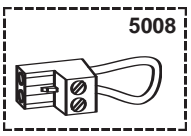
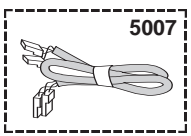
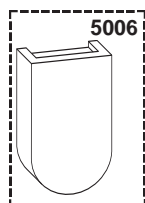
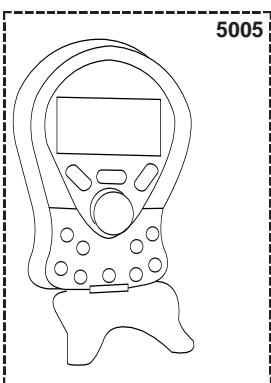
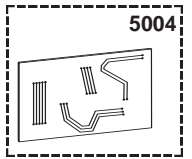
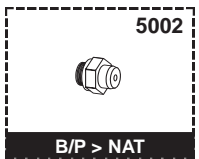
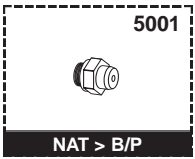
Senal	Designación	Referencia	Tipo	24		28		32		24		28		24		28		32		Fecha		
				GENUS		GENUS		GENUS		CLAS		CLAS		CLAS SYSTEM		CLAS SYSTEM		CLAS SYSTEM		de	a	
				FF	CF	FF	CF	FF	CF	FF	CF	FF	CF	FF	CF	FF	CF	FF	CF	FF	CF	
0600	RETURN GROUP																					
0601	MOTOR - THREE-WAY VALVE	61302483		●	●	●	●	●	●	●	●	●	●	●	●	●	●	●	●			
0602	DRAIN COCK	65104328		●	●	●	●	●	●	●	●	●	●	●	●	●	●	●	●			
0603	3-WAY SPRING KIT (D.H.W.)	65104314		●	●	●	●	●	●	●	●	●	●	●	●	●	●	●	●			
	PLUG	65105093																				
0604	CLIP	65104331		●	●	●	●	●	●	●	●	●	●	●	●	●	●	●	●			
0605	O-RING 3,53X17,04	65104262		●	●	●	●	●	●	●	●	●	●	●	●	●	●	●	●			
0606	SENSOR (REED)	65104323		●	●	●	●	●	●	●	●	●	●	●	●	●	●	●	●			
0607	CLIP	65104332		●	●	●	●	●	●	●	●	●	●	●	●	●	●	●	●			
0608	CLIP	65104316		●	●	●	●	●	●	●	●	●	●	●	●	●	●	●	●			
0609	RETURN GROUP	65104335																				
	RETURN GROUP	65105322		●	●	●	●	●	●	●	●	●	●	●	●	●	●	●	●			
0610	FILLING TAP KIT	65104324																				
	AUTOMATIC FILLING TAP	65104669		●	●	●	●	●	●	●	●	●	●	●	●	●	●	●	●			
0611	RIDUCTORS (KIT)	65104318	8-10-12 LT	●	●	●	●	●	●	●	●	●	●	●	●	●	●	●	●			
0612	CLIP D=18	65104259		●	●	●	●	●	●	●	●	●	●	●	●	●	●	●	●			
0613	CLIP D:10	65104260		●	●	●	●	●	●	●	●	●	●	●	●	●	●	●	●			
0614	O RING D: 5.7-1.9	61009834-10																				
0615	PRESSURE GAUGE	65104234																				
0616	CLIP	65104322		●	●	●	●	●	●	●	●	●	●	●	●	●	●	●	●			
0617	O - RING (21.89X2.62)	65104320		●	●	●	●	●	●	●	●	●	●	●	●	●	●	●	●			
0618	PIPE (C.H. RETURN)	65104265		●																	02/08	
	PIPE (C.H. RETURN)	65104265			●	●	●	●	●	●	●	●	●	●	●	●	●	●	●			
	PIPE (C.H. RETURN)	65106308		●																	03/08	
0619	PUMP 6M 2V	60000591																				
	PUMP	65104227																				
	PUMP	65104319		●	●	●	●	●	●	●	●	●	●	●	●	●	●	●	●			
0620	O-RING D: 17.86-2.62	61308091		●	●	●	●	●	●	●	●	●	●	●	●	●	●	●	●			
0621	LOW PRESSURE SWITCH	65104321		●	●	●	●	●	●	●	●	●	●	●	●	●	●	●	●			
0622	WATER FILTER	65104330		●	●	●	●	●	●	●	●	●	●	●	●	●	●	●	●			
	WATER FILTER	65104711																				
0623	O - RING (9.19X2.62)	65104313		●	●	●	●	●	●	●	●	●	●	●	●	●	●	●	●			
0624	CLIP	65100680																				
0625	CLIP	60000309		●	●	●	●	●	●	●	●	●	●	●	●	●	●	●	●			
0626	O - RING (1.78X8.74)	65104329																				
0627	O - RING (23.47X2.62)	65104315		●	●	●	●	●	●	●	●	●	●	●	●	●	●	●	●			
0628	UNION (3/4)	65104326		●	●	●	●	●	●	●	●	●	●	●	●	●	●	●	●			
0629	UNION (1/2)	65104327		●	●	●	●	●	●	●	●	●	●	●	●	●	●	●	●			
0630	FLOW METER	65104317		●	●	●	●	●	●	●	●	●	●	●	●	●	●	●	●			
	D.H.W. PLUG	65105179																				
0631	CLIP	61307589		●	●	●	●	●	●	●	●	●	●	●	●	●	●	●	●			
0632	TEMPERATURE PROBE + CLIP	990686		●	●	●	●	●	●	●	●	●	●	●	●	●	●	●	●			
0633	PLUG	65104377		●	●	●	●	●	●	●	●	●	●	●	●	●	●	●	●			
0634	UNION (PUMP - PIPE)	65104266		●	●	●	●	●	●	●	●	●	●	●	●	●	●	●	●			
	UNION (PUMP - PIPE)	65105034																				
0635	O - RING (15.54X2.62)	65104325		●	●	●	●	●	●	●	●	●	●	●	●	●	●	●	●			
0636	CHECK VALVE CARTRIDGE	65105323		●	●	●	●	●	●	●	●	●	●	●	●	●	●	●	●			
0637	O-RING 17,17X1,78	65104303		●	●	●	●	●	●	●	●	●	●	●	●	●	●	●	●			
	O-RING 16,5X1,6	65105180																				
0638	AUTO AIR VENT WITH O-RING	65104703		●	●	●	●	●	●	●	●	●	●	●	●	●	●	●	●			
0639	U-CLIP	65104704		●	●	●	●	●	●	●	●	●	●	●	●	●	●	●	●			
0640	O-RING	65104705		●	●	●	●	●	●	●	●	●	●	●	●	●	●	●	●			
0641	INTERFACE	65105181																				
0646	EXCHANGER GASKET	65104334																				
0647	CLIP	65104339																				



Senal	Designación	Referencia	Tipo	GENUS												Fecha					
				24		28		32		24		28		24		28		32		de	a
				FF	CF	FF	CF	FF	CF	FF	CF	FF	CF	FF	CF	FF	CF				
0700	ELECTRICAL BOX																				
0701	PRESSURE GAUGE	65104234																			
0702	EARTH WIRE	65104286		•	•	•	•	•	•	•	•	•	•	•	•	•	•	•			
0703	CABLE CLAMP	571562		•	•	•	•	•	•	•	•	•	•	•	•	•	•	•			
0704	PUSH	65104228		•	•	•	•	•	•	•	•	•	•	•	•	•	•	•			
0705	P.C.B. (MAIN)	65105816		•	•	•	•	•	•	•	•	•	•	•	•	•	•	•	01/07		
	P.C.B. (MAIN)	65105817																			
	P.C.B. (MAIN)	65105817		•	•	•	•	•	•	•	•	•	•	•	•	•	•	•	02/07		
0706	PRINTED CIRCUIT BOARD (DISPLAY)	65104448																			
	PRINTED CIRCUIT BOARD (DISPLAY)	65105149		•	•	•	•	•	•	•	•	•	•	•	•	•	•	•	02/07		
0707	DISPLAY WIRING	65104297		•	•	•	•	•	•	•	•	•	•	•	•	•	•	•			
0708	DISPLAY GLASS	65104356																			
0709	PUSH BUTTON GROUP (MENU)	65104264		•	•	•	•	•	•	•	•	•	•	•	•	•	•	•			
	PUSH BUTTON GROUP (MENU)	65104503																			
0710	PUSH (CASE DOOR)	65100676		•	•	•	•	•	•	•	•	•	•	•	•	•	•	•			
0711	THREE WAY VALVE CABLE	65104523		•	•	•	•	•	•	•	•	•	•	•	•	•	•	•			
0712	PUMP CABLE	65104520		•	•	•	•	•	•	•	•	•	•	•	•	•	•	•			
0713	HEAT SENSOR CABLE	65104517		•	•	•	•	•	•	•	•	•	•	•	•	•	•	•			
	HEAT SENSOR CABLE	65105188																			
0714	FEEDER	61308031		•	•	•	•	•	•	•	•	•	•	•	•	•	•	•			
0715	FRONT COVER	65104306		•	•	•	•	•	•	•	•	•	•	•	•	•	•	•			
	FRONT COVER	65104449																			
0716	MODULE KIT (EEPROM)	65105148		•	•	•	•	•	•	•	•	•	•	•	•	•	•	•			
0718	KNOB	65104235		•	•	•	•	•	•	•	•	•	•	•	•	•	•	•			
	KNOB	65104450																			
0719	CABLE CLAMP	65103377		•	•	•	•	•	•	•	•	•	•	•	•	•	•	•			
0720	CONTROL PANEL COVER (REAR)	65104293		•	•	•	•	•	•	•	•	•	•	•	•	•	•	•			
0721	CONTROL PANEL	65104300		•	•	•	•	•	•	•	•	•	•	•	•	•	•	•			
0722	SENSOR PRESSURE CABLE	60000813		•	•	•	•	•	•	•	•	•	•	•	•	•	•	•			
	OVERHEAT THERMOSTAT CABLE	60000814		•	•	•	•	•	•	•	•	•	•	•	•	•	•	•			
	FAN CABLE	65104519		•	•	•	•	•	•	•	•	•	•	•	•	•	•	•			
	OVERHEAT THERMOSTAT CABLE	65104708																			
	FAN SENSOR CABLE	65104709		•	•	•	•	•	•	•	•	•	•	•	•	•	•	•			
0725	ROOM THERMOSTAT CABLE	65104524		•	•	•	•	•	•	•	•	•	•	•	•	•	•	•			
0726	LOWER COVER	65104379		•	•	•	•	•	•	•	•	•	•	•	•	•	•	•			
	LOWER COVER	65105032																			
0727	INSPECTION COVER	65104294		•	•	•	•	•	•	•	•	•	•	•	•	•	•	•			
0728	IONIZATION ELECTRODE CABLE	65104518		•	•	•	•	•	•	•	•	•	•	•	•	•	•	•			
0729	PULSANTE DX	65104222																			
	PUSH BUTTON (R.H.SIDE)	65104268		•	•	•	•	•	•	•	•	•	•	•	•	•	•	•			
	PUSH BUTTON (R.H.SIDE)	65105187																			
0730	PULSANTE SX	65104229																			
	PUSH BUTTON (L.H.SIDE)	65104269		•	•	•	•	•	•	•	•	•	•	•	•	•	•	•			
0731	PUSH BUTTON ON/OFF	65104267		•	•	•	•	•	•	•	•	•	•	•	•	•	•	•			
0732	AUTOMATIC FILLING WIRING	65104525		•	•	•	•	•	•	•	•	•	•	•	•	•	•	•			
0733	CONTROL PANEL (COMPLETE)	65104692		•	•	•	•	•	•	•	•	•	•	•	•	•	•	•	01/07		
0734	CLIP	65100680																			
0735	O RING D: 5.7-1.9	61009834-10																			
0736	PLUG	65105185																			
0738	CONTROL PANEL	65105069																			
	CONTROL PANEL (COMPLETE)	65105150		•	•	•	•	•	•	•	•	•	•	•	•	•	•	•	02/07		
	CONTROL PANEL	65105186																			



5000



Senal	Designación	Referencia	Tipo													Fecha				
				GENUS			GENUS			GENUS			CLAS			CLAS SYSTEM			de	a
				24	28	32	24	28	32	24	28	32	24	28	32					
FF	FF	CF	FF	FF	CF	FF	FF	CF	FF	FF	CF	FF	FF	CF						
0900	JIG PLATE & PIPE FITTING																			
0901	MOTOR (3-WAY VALVE)	997147											•	•	•	•	•			
0902	SAFETY VALVE (7 BAR)	65105630											•	•	•	•	•			
0904	WIRING (PROBE)	65105629											•	•	•	•	•			
0905	TAP (1/2)	65105098		•	•	•	•	•	•	•	•	•	•	•	•	•	•			
0906	TAP (3/4)	65104694		•	•	•	•	•	•	•	•	•	•	•	•	•	•			
0908	3-WAY VALVE GROUP	999608											•	•	•	•	•			
0914	REDUCER	65102380											•	•	•	•	•			
0915	GASKET 1/2	573528		•	•	•	•	•	•	•	•	•	•	•	•	•	•			
0916	GASKET 3/4	573520		•	•	•	•	•	•	•	•	•	•	•	•	•	•			
0917	GASKET 3/8	573521											•	•	•	•	•			
0918	D.H.W. INLET FILTER	995304		•	•	•	•	•												
0923	UNION	65105631											•	•	•	•	•			
0924	LOCK NUT (BRASS 1/2)	569794											•	•	•	•	•			
0925	FLEXIBLE PIPE	65105632											•	•	•	•	•			
0926	EXPANSION VESSEL	998122											•	•	•	•	•			
0927	KNOB	65104450											•	•	•	•	•			
0928	THREE WAY VALVE CABLE	65106156											•	•	•	•	•			
0929	UNION	65104546											•	•	•	•	•			
0930	3/4 TAP	65105097		•	•	•	•	•	•	•	•	•	•	•	•	•	•			
0931	PIPE (SAFETY VALVE OUTLET)	65105398											•	•	•	•	•			
0932	FIXING CLIP (MOTOR)	997077											•	•	•	•	•			
0933	TRAP	65105284											•	•	•	•	•			
5000	ACCESSORY																			
5001	BURNER JET FULL KIT (LPG)	65104582				•					•				•					
	BURNER JET FULL KIT (LPG)	65105166							•									•		
	BURNER JET FULL KIT (LPG)	65106690	LG	•	•				•	•	•	•	•	•						
	BURNER JET FULL KIT (LPG)	65106695	LG				•										•			
5002	BURNER JET FULL KIT (NG)	65104583				•					•				•			•		
	BURNER JET FULL KIT (NG)	65106691	NG	•	•		•	•	•	•	•	•	•	•	•	•	•			
5004	REMOTE CONTROL INTERFACE	65105815		•	•	•	•	•	•	•	•	•	•	•	•	•	•			
5005	REMOTE CONTROL	65105167		•	•	•	•	•	•	•	•	•	•	•	•	•	•			
5006	OUTDOOR SENSOR	999133		•	•	•	•	•	•	•	•	•	•	•	•	•	•			
5007	KIT SERIAL MODEM WIRING	65105169		•	•	•	•	•	•	•	•	•	•	•	•	•	•			
5008	CONNECTOR (ROOM THERMOSTAT)	990381		•	•	•	•	•	•	•	•	•	•	•	•	•	•			

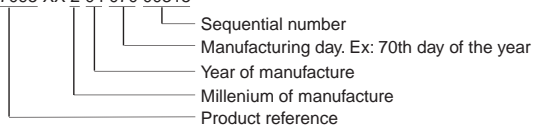
LIST OF THE ABBREVIATIONS

HW	: Hot water.
CW	: Cold water.
C	: Ceramic resistance (normal heating).
Ca	: Ceramic resistance (accelerated heating)
TP	: Immersion heater.
1F	: With fittings.
2F	: Without fittings.
3F	: With fittings and another outlet connection.
AMI	: With mixing valve.
SMI	: Without mixing valve.
PUISS	: Power of th appliance.
PN	: Appliance with normal pression.
LP	: Appliance with low pression.
PV	: Appliance with variable power.
PF	: Appliance with fixed power..

IDENTIFICATION PLATE

SERIAL NUMBER

Ex: 0537095 XX 2 04 070 00315



The indications mentionned on the prices, commercial or technical literature and the scheme are written for your guidance and are available at a given time. The CONSTRUCTOR retains the power to modify the presentation, the form, the size, the conception or the material of the products.

